

# Introducing user-friendly compact arm driver

Specialized for low torque range (0.2~3.0N·m) manual screw driving !



## Feature

- 1 **High speed screw driving !**  
Specialized in screw driver for low torque range and reduced the spindle inertia moment.
- 2 **Operator-friendly working area !**  
Smooth moving cartesian coordinate type table
- 3 **Two types of start switch can be chosen !**  
Choose from push to start or lever start
- 4 **Option Speed-up screw driving process !**  
Simplified stopper (max. 4 positions) will stop driver at screw driving point and/or screw pick up point quickly.
- 5 **Option Support operator !**  
OK lamp will visually show upon screw driving completion.

## Specifications

Item	Specification	
Working area	Back and forth	150mm (Option : 200mm)
	Right and left	200mm (Option : 250mm, 300mm)
	Up and down	80mm (Option : 110mm)
Allowed maximum torque <sup>※1</sup>	3.0N · m	
Driver <sup>※2</sup>	KX Driver (KX050/100/150T2-01, KX100T2-03)	
	NX Driver (NX008/020T2, NX020T3)	
Bit type <sup>※3</sup>	Phillips, Slotted, Hex, Torx and others	
Machine weight	Max. 15kg	
Number of channels	Max. 16sets	
Power supply	Single phase AC200 ~ 230V±10% 50/60Hz	
	Single phase AC100 ~ 115V±10% 50/60Hz (not applicable when SD600T03 is used.)	

※1 Limited by driver spindle strength.

Usage over this torque is not covered under warranty.

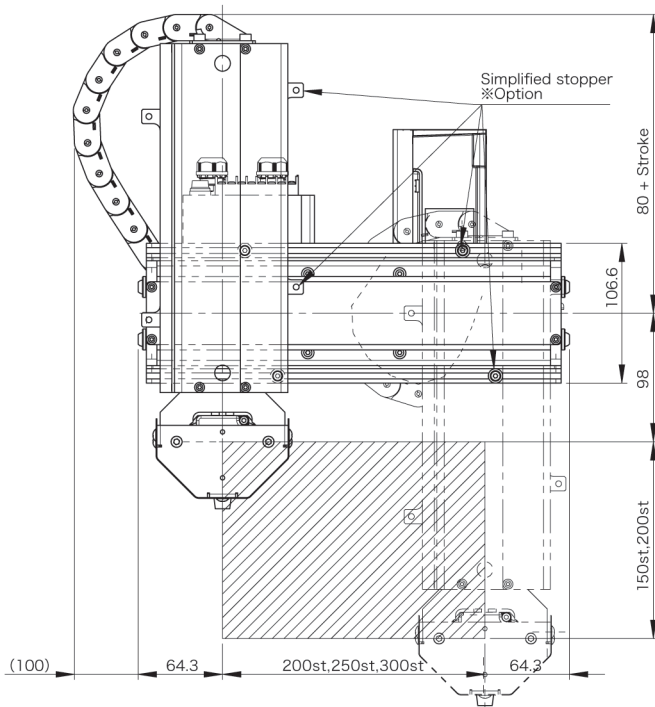
※2 For more detail about Driver, please refer to KX Driver and/or NX Driver catalog.

※3 Special type of bit can be supplied. Please contact sales agent.

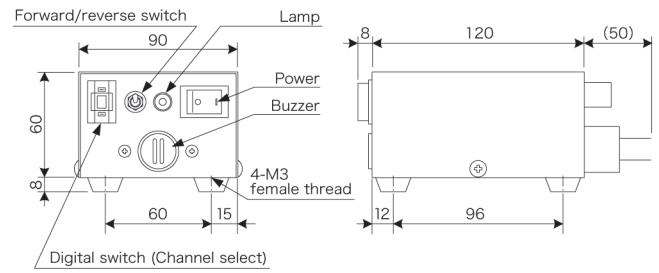
# NITTO SEIKO CO., LTD.

# Low torque range compact arm driver AD030XY

Outside dimension (unit : mm)



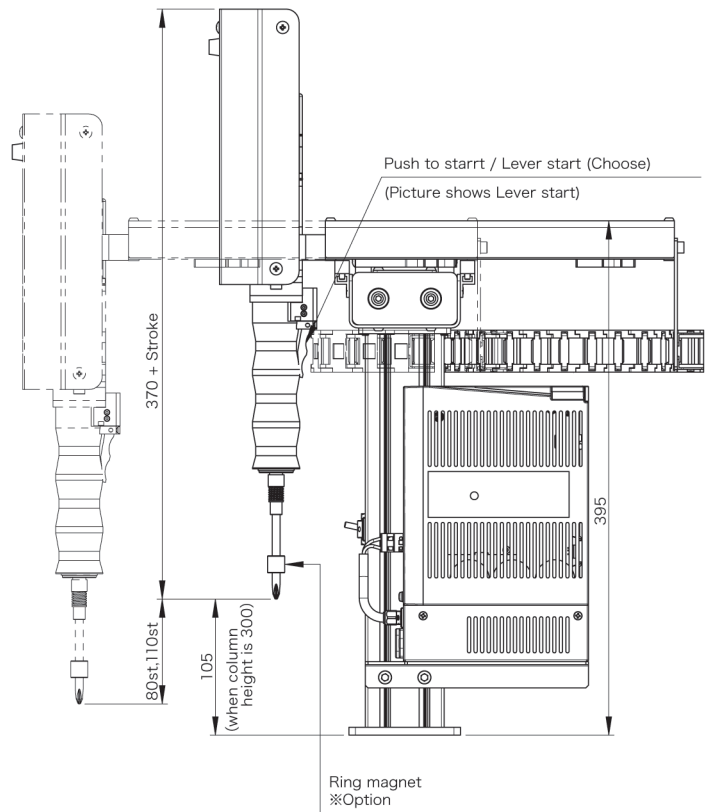
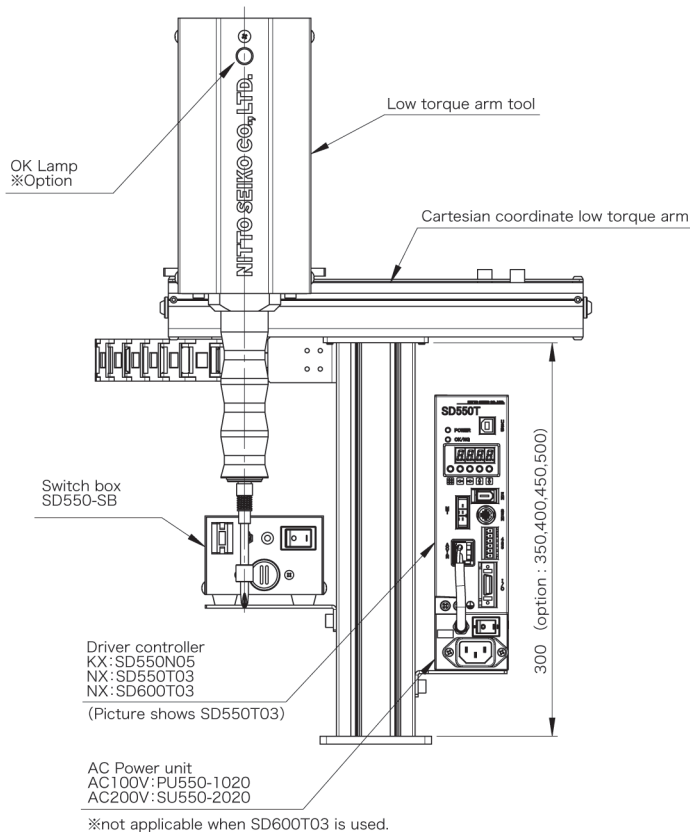
## Switch box



## Set up distance between each unit (Standard specification)

Connection name	Cable name	Distance between each unit
Column to Controller	Driver cable (2m)	within 0.5m
Controller to Switch box	I/O cable (2m)	within 2m
Controller to Power source	AC Power cable (4m) <sup>※1</sup>	within 4m
Switch box to Power source	AC Power cable (3m) <sup>※2</sup>	within 3m

※1 without plug ※2 with plug



## NITTO SEIKO CO.,LTD.

### Machinery Division

Website : <https://www.nittoseiko.co.jp/>

## Global sales head office:

2, Shiroyama, Ayabe city, Kyoto 623-0003, Japan  
 Telephone / +81-773-42-1290  
 Fax / +81-773-43-1553

● Specifications and other matters are subject to modifications for performance improvements without notice.  
 ● Unique nouns like the product name indicated in this brochure are registered or not registered trademark of each company.