

Special light-weight handy automatic screwdriver

FEEDMAT

**FM503H-BL
FM311DR-BL**



Amazingly light driver unit.

- Tool unit weighs only 500g.
- Slimmest and lightest self-fed handheld driver in the industry.

Compact and Slim design

The small chuck size allows:

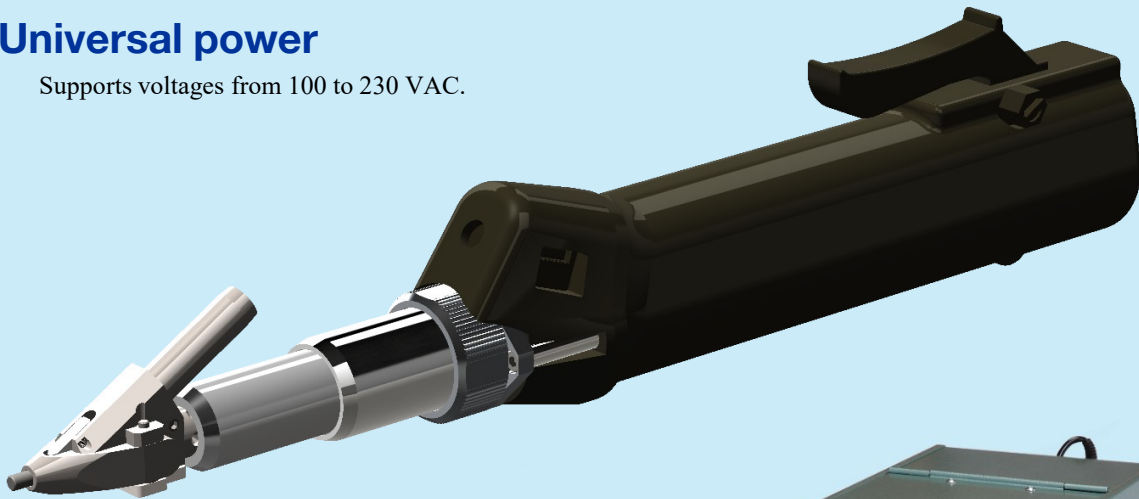
- Balanced weight
- Ergonomic design with less operator fatigue.
- Operator can see the screw and guide it easier to the work piece.

Maintenance free

Brushless motor requires no maintenance.

Universal power

Supports voltages from 100 to 230 VAC.

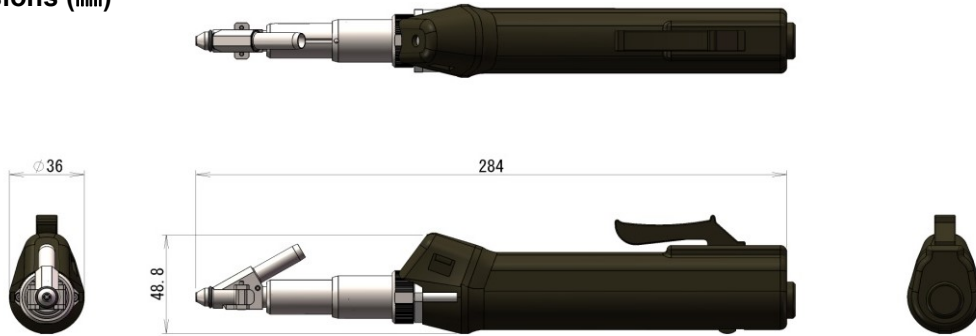


■ Specification of driver unit

Driver Type (*1)		BL-5000-OPC	BL-5000-15-OPC	BL-5000-20-OPC
Applicable Screw (*2),(*3)	Nominal diameter	2~3mm (head diameter max.6.3mm)		
	Thread length	6~14mm		
Torque		0.2-1.2N·m	0.2-1.2N·m	0.2-1.0N·m
No-load rotation speed (HI)		900min ⁻¹	1500min ⁻¹	2200min ⁻¹
No-load rotation speed(LOW)		590min ⁻¹	1000min ⁻¹	1500min ⁻¹
Starting method (*4)		Lever start / Push start		
Weight		0.5kg		

- *1) Please choose best driver unit for 3 types.
- *2) Products will be built up based on specification of screws, therefore it can be used for one kind of screws only.
- *3) Application range of screws will be changed by type of screw head, or size. Please contact us to make sure for it.
- *4) Lever start and push start are commoditized. You can change the setting of starting method.

■ External dimensions (mm)



■ Specification of FM311DR BL (Feeder) (*1)

Effective drum capacity	Approx.120mL
Power supply	Single phase AC100~230V 50~60Hz
Power capacity	max.125VA
Air pressure	0.4~0.5MPa
Weight	6.3kg

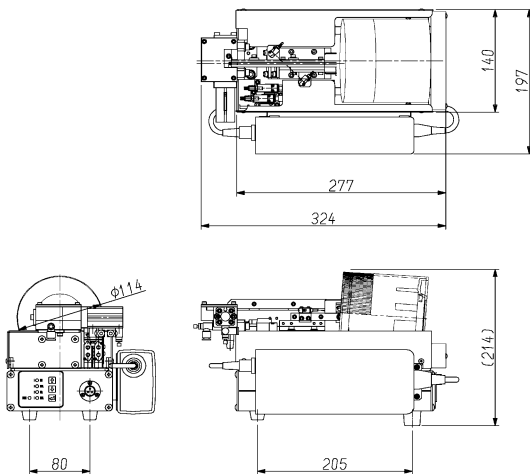
*1) This feeder is dedicated for BL specification.

■ Specification of FM503H BL (Feeder) (*1)

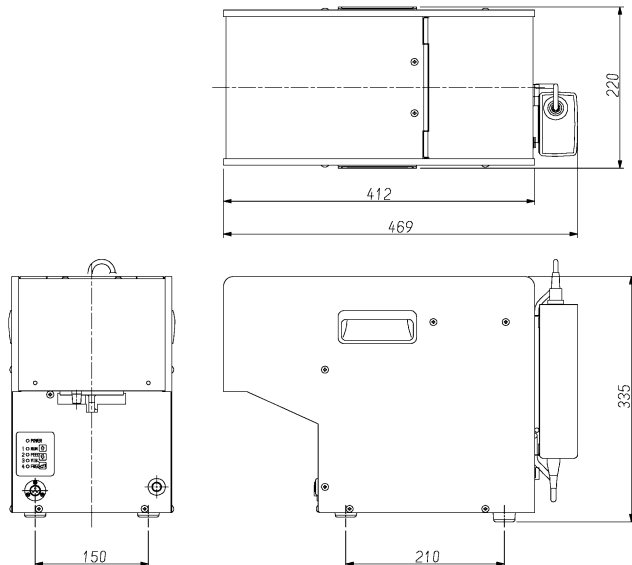
Effective basket capacity	Approx.450mL
Power supply	Single phase AC100~230V 50~60Hz
Power capacity	max.125VA
Air pressure	0.4~0.5MPa
Weight	19kg

*1) This feeder is dedicated for BL specification.

■ External dimensions of FM311DR (mm)



■ External dimensions of FM503H (mm)



NITTOSEIKO CO.,LTD.

Assembly Machine Division / Shiroyama Plant
Overseas sales Dept.

2, Shiroyama, Ayabe city, Kyoto 623-0003, Japan
Telephone / +81-773-42-1290 Fax / +81-773-43-1553
URL : <https://www.nittoseiko.co.jp/>

● Specifications and other matters are subject to modifications for performance improvements without notice.
● Unique nouns like the product name indicated in this brochure are registered or not registered trademark of each company.